

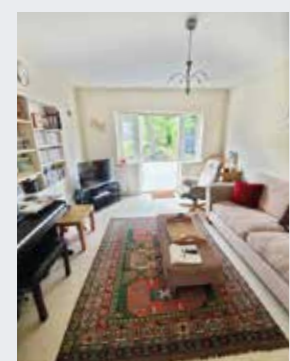
'I wanted to create a home office that had Zoom appeal'

A mix of old and new gives this space real personality

WORDS AND STYLING DILLY ORME | PHOTOGRAPHY ANNA STATHAKI



Karina, who works in the public sector, lives with her husband Simon and their two teenage daughters in a detached, four-bedroom 1930s house in Surrey



Before

'This was previously a playroom and the girls were no longer using it as much as they had. Working from home coincided with my youngest going off to university, so I decided it was time to reclaim the room.'



STORAGE

Smart shelving is flexible and practical and shows off Marina's books



SEATING AREA

A relaxing corner has been created for reading – something high on Karina's wishlist

How did you start the renovation?
I looked at interiors magazines, online and on Pinterest for inspiration. New furniture was needed, and as we were in lockdown, I knew I'd need advice on what to buy so I looked for local interior designers and chose Slightly Quirky. I had a few FaceTime chats with Caroline Nicholls and she came round to get a feel for the house when lockdown restrictions were eased.

What were your main objectives?
The room needed to work as an office as well as a relaxing space for weekends. I wanted it to have a sense of fun – something that would cheer me up each morning. I also wanted an attractive Zoom backdrop, plus somewhere to display my books.

What was your inspiration for the bold scheme?
The clean lines and blocks of colour in the city of Chandigarh in India where I grew up.

Who carried out the work?
My friend Sharon, who is self-employed, was at a loose end over the summer as all her regular work

had dried up due to the pandemic. Her home always looks immaculate and she has a good eye. Luckily she said yes to decorating my office and approached it as if it were her own house.

Did you face any challenges throughout the whole process?

I was very lucky that it was my friend doing the work, as we hit a problem putting up the wallpaper. It's printed to your measurements and when we sent the figures off, we had added some on for wastage, not realising that the company would do the same. When Sharon came to hang it, she realised the main pattern would be off centre because of the extra paper. The wallpaper has such great impact... it's fabulous. The light catches different zones at different times, which changes the ambience in the room to great effect.

Are you happy with how it turned out?

Yes – Caroline and the team at Slightly Quirky found pieces from shops I'd never have thought to explore. The ceiling light is excellent as it brings all the colours and patterns in the room together. **IB**

OUR SOURCEBOOK Lulworth Blue modern emulsion, £53/2.5L, farrow-ball.com **Wallpaper**, £37/m, Hovia hovia.com **Desk**, £699; **lamp**, £240; both johnlewis.com **Units**, £842 each, String stringfurniture.com **Armchair**, £312; **footstool**, £173; both bombinate.com Louis Poulsen **pendant**, £685, skandium.com



STATEMENT WALLPAPER

The spectacular graphic design adds real personality to the space

WALLS

Continuing the blue of the wallpaper on to the other wall gives the room a fresh yet encompassing look

WHAT WE'VE LEARNED

'Using a professional helped me step back and visualise more clearly what I wanted – it is so much easier shopping from your sofa when someone has done the shortlisting for you'

DESK

A retro-style desk works well in the contemporary space and is also in keeping with the 1930s house

FLOORING

The pale grey Marmoleum flooring is the perfect backdrop for the striking rug that was carefully chosen to mirror the colours in the wallpaper in a contrasting pattern

WHAT WE SPENT

PAINT £53
WALLPAPER £507
DESK £699
LIGHTING £925
SHELVING £1,684
ARMCHAIR AND FOOTSTOOL £485
TOTAL £4,353