



# LUXE CONTRAST

Dark wood, vibrant accents and modern designs have created a spacious bedroom and ensuite. Clare Haxby, 50, an artist, lives with her husband, Owen Wyrley-Birch, 52, a company director, and their children Teddy, 17, Scarlett, 15, and Alfie, seven, near Epsom in Surrey. Their home was once a manor house that was divided up into separate properties during the early 1900s. Since moving in a year ago, they've had it renovated throughout and had a wet room and dressing area incorporated into the main bedroom ►



**BED**  
The bold lines of the four poster create a dramatic focal point

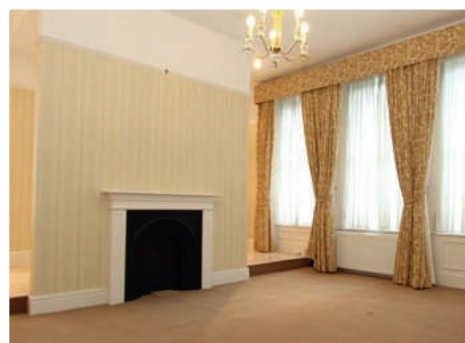
**FLOORING**  
The dark varnished floorboards blend with the furniture



#### WALLS

Wallpaper with a line-drawn design of houses in soft grey and white creates an understated feature

#### BEFORE



#### ACTION PLAN

CREATE SEPARATE DRESSING AREA AND ENSUITE

INSTALL NEW SANITARYWARE AND TILE ENSUITE

SAND AND STAIN THE FLOORBOARDS

PAINT, WALLPAPER AND PUT UP SHUTTERS

#### COLOUR SCHEME

Highlights of mustard yellow add warmth to the otherwise monochrome room





**UNIQUE CHARACTER**  
Travels in Asia inspired Clare's dramatic artwork, which features colours used throughout the bedroom



**FEATURE FLOORING**  
Moroccan-style tiles make a fantastic decorative statement

### HOUSE BEAUTIFUL SAYS...

'This is a creative mix of imposing black furniture with subtle patterns from tiles and wallpaper, all livened up with bright yellow highlights.'

#### Tell us about your home

We bought this property after returning from living in Singapore and completely renovated it. As it had been empty for a while and the decor was very 1980s, every room needed attention. Our bedroom and ensuite took a good chunk of the budget, as we had to get some structural work done. However, as we had decided that this is going to be our forever home, we felt justified in treating ourselves to some luxury fittings.

#### How did the bedroom evolve?

While we were living in Singapore we bought our bed, cabinets and wardrobe, and had them shipped over to the UK when we moved back. This dark wood furniture was the starting point for the scheme. I wanted an elegant bedroom with an open-plan ensuite, all with the look of a luxury hotel. Behind the bed we went for a feature wall using Little Greene's Hampstead wallpaper in a soft grey and white. The floors were sanded and varnished in a dark tone to complement the furniture and create a cosy feel.

#### You made some big changes...

Yes, we put up a stud wall to divide the old bathroom and a raised floor was removed in part of the space that became a dressing area. Once we'd decided how to split the room, things began to take shape. We went for a single showstopper basin, which was a deciding factor in how big the wet room could be.

#### And the decor?

It was really important to me to get the tiles right, and I'd decided that I definitely wanted to include pattern - I spent a long time looking at black, grey and cream options, rather than going for stark white. I also found traditional-style taps and searched out a shower fitting in a shape that I really loved.

#### Was it a smooth process?

We planned carefully to ensure everything was done in the right order and had to work around the lead times for each element in the ensuite. The plumbing was done first in preparation for the sanitaryware to go in. Next, the bedroom floor was sanded and stained, and then the wardrobes were fitted. Following this the shower and basin fittings were installed, and, finally, the painting and wallpapering were done.

#### What have you learned from this project?

That the details count. After going to great lengths to choose the right tiles, I wanted to ensure the grout was the perfect shade. Our builder made up boards with four shades of grey grout to help us pick the one that looked best.

#### Any aspect that you're particularly happy with?

The shutters - the pale grey colour finishes off the room beautifully. I also love the generous space of the shower and the way we've got a mixture of hidden and display storage. ►



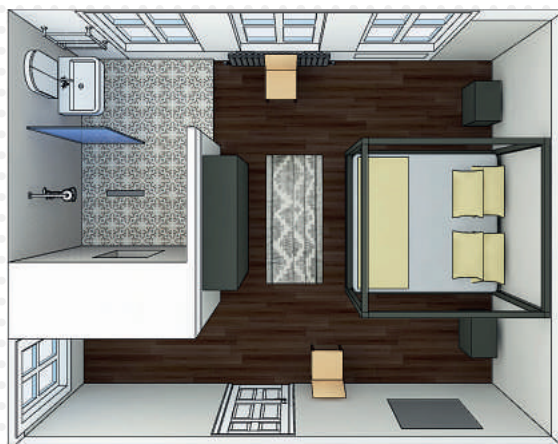
IN  
DETAIL



**FINISHING TOUCHES**  
Plump cushions in different patterns and textures give a sumptuous feel

THE NEW LAYOUT

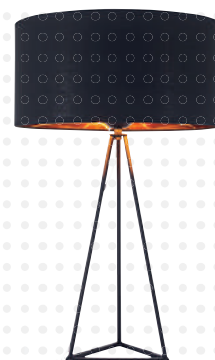
As there's no door between the bedroom and the ensuite shower room, the space has an open-plan feel



WHAT IT COST

<b>Bedroom</b>	
Paint.....	£180
Wallpaper.....	£192
Shutters.....	£1,600
<b>Total.....</b>	<b>£1,972</b>
<b>Ensuite</b>	
Wall tiles.....	£700
Floor tiles.....	£1,100
Wet room panel.....	£529
Basin.....	£1,394
Basin taps.....	£664
Shower.....	£2,373
Heated towel rail.....	£1,478
<b>Total.....</b>	<b>£8,238</b>

GET THE LOOK



Orion geometric tripod table lamp, £49, Cult Furniture



Tabor small pot, £36, Abode Living



Kirkby Design Arcade chenille cushion, £63, Sweetpea & Willow



**EASTERN STYLE**  
The mirror-fronted wardrobe came from Singapore

SHOPPING LIST

**Bedroom walls** in Salt IV emulsion, £90 for 5L, Paint & Paper Library. Hampstead **wallpaper** in Cool Grey, £64 a roll, Little Greene. **Floor** stained in Ronseal Diamond Hard walnut floor varnish, £34.50 for 2.5L, Wood Finishes Direct. Faux wood **shutters** in Soft Grey, £1,600, Luxaflex. Victorian **radiator**, about £220, plus £175 for pressure testing and respray, Authentic Reclamation. Similar **bed and side tables**, Canton four poster, £1,175; tables, £255 each; all Lombok. Primrose Fitz **chair**, £369, Swoon Editions. Bedside **lights**, about £120 each, Taylor Design. Velvet **throw**, £225; matching **cushions**, £30 each; all Feather & Black. Similar **bedlinen**, Circles & Squares Silver duvet cover, £116, Planet Linen. *Frangipani Called Me To The Temple*, **painting**, from £4,000, by Clare Haxby. **Ensuite** Hexagon Mosaic unglazed wall tiles, £57.59 a sq metre, Waxman Ceramics. Romanesque **floor tiles**, £224.95 a sq metre, Original Style. La Chapelle console **basin and legs**, £1,394; Classic **towel rail**, £1,478; Mackintosh black lever **basin mixer**, £664; Godolphin black lever thermostatic **mixing valve** with riser kit, handset, lever and diverter with 8in rose, £2,373; bone-china **mug and holder**, £247; **glass shelf** with rail, £199; Classic **wall light**, £277; all Lefroy Brooks. **Wet room panel**, £529, Matki

WORDS DILLY ORME. PHOTOGRAPHY TAMARA CAVE. PLAN CHRISTOS PINIATIDES